



Ashby Hastings Primary School

"Inspiring minds to foster confidence"

Health and Safety Policy

Adopted by Ashby Hastings Primary School on:	Date - August 2021
This policy will be reviewed	As policies, procedures and regulations are updated.
Version	1.0

For the purpose of this policy, the 'Head Teacher' refers to the Executive Head teacher, Head teacher or Head of School.

Statement of Intent

- 1.1 As a responsible employer, the Governing Body of Ashby Hastings Primary School will honour their legal obligations, in particular the requirements of the Health and Safety at Work Act 1974 and associated regulations and codes of practice.
- 1.2 The Governing Body recognises and accepts its responsibilities and duties as the employer to conduct its operations in a manner which protects the health, safety and welfare of employees, students and visitors so far as is reasonably practicable.
- 1.3 In compliance with the Management of Health and Safety at Work Regulations, risk assessments will be undertaken and arrangements will be made, where significant risks are identified, the necessary preventative and protective measures will be put into place so far as is reasonably practicable using a sensible risk management approach.
- 1.4 Ashby Hastings Primary School is committed to the prevention of accidents and ill health.
- 1.5 Ashby Hastings Primary School will work towards continual health and safety improvement.
- 1.6 To achieve these objectives we will:
 - Conduct all our activities safely and in compliance with legislation and where possible, best practice
 - Provide safe working conditions and safe equipment
 - Ensure a systematic approach to identify risks is developed and implemented and sufficient resources are allocated to control them
 - Provide suitable information, instruction, training and supervision
 - Promote a positive health and safety culture that is demonstrated by open communication and a shared commitment to the importance of health, safety and welfare
 - Promote the principles of sensible risk management
 - Monitor, review and modify this policy and any arrangements as required.
- 1.7 All of Ashby Hastings Primary School's employees have a responsibility to take reasonable care of themselves and others and to co-operate with their employer to ensure statutory duties and obligations are fulfilled.

2.0 Organisation – Roles and Responsibilities

Local Governing Body

- 2.1 Ashby Hastings Primary School is an Academy whereby the Symphony Learning Trust has overall responsibility as the employer to ensure compliance with health and safety legislation and to ensure the health, safety and welfare employees, pupils, visitors and contractors and the self-employed.
- 2.2 The Local Governing Body, on behalf of the Trust, is responsible for:
- determining the school's/academy's health and safety policy and its implementation
 - allocating sufficient funds for health and safety
 - establishing clear lines of accountability for health and safety
 - periodically assessing the effectiveness of the policy and ensure that any necessary changes are made
 - identifying and evaluating risks relating to possible accidents and incidents connected with Ashby Hastings Primary School.
 - providing access to competent health and safety advice

Head Teacher

- 2.3 Without limiting the responsibility of the Governors/Academy Trust, the Head Teacher will generally oversee the day-to-day management of safety and implementation of this policy within Ashby Hastings Primary School.
- 2.4 The Head Teacher will comply with Ashby Hastings Primary School's health and safety policy and in particular will:
- make him/herself familiar with any documentation and/or instruction referring to the health and safety arrangements for staff, building maintenance or operation of Ashby Hastings Primary School and maintain an up to date system of policies, procedures and risk assessments
 - work with trade unions and employee health and safety representatives and ensure that all employees are aware of and accountable for their specific health and safety responsibilities and duties
 - in the event of any hazard or risk to health and safety of any persons under their control, take appropriate action to control the hazard/risk
 - ensure the health and safety policy, procedures, action plan and risk management programme is implemented as an integral part of business, operational planning and service delivery
 - liaise with the Local Governing Body
 - undertake monitoring and ensure the provision of adequate resources to achieve compliance
 - ensure that local procedures for the selection and monitoring of contractors are in place
 - take appropriate action under Ashby Hastings Primary School's disciplinary procedures against anyone under their control found not complying with health and safety policies and/or procedures
 - ensure that Ashby Hastings Primary School has access to competent health and safety advice

- 2.5 In addition to their statutory duties, Head Teachers and teachers have a common law duty of care for pupils which stems from their position in law “in loco parentis”.

Senior Leadership Team/Team Leaders/SBM

- 2.6 The leadership team/team leaders/heads of faculty/departments at Ashby Hastings Primary School will undertake general responsibility to ensure that all necessary health and safety activities, requirements and standards are undertaken and met within their respective areas of control. This will be done under the direction of the Head Teacher. Any member of staff with supervisory responsibilities will:-

- make themselves familiar with and conform to this policy, including any instructions and requirements for safe methods of work
- identify new and existing hazards, initiate risk assessments, record the significant findings, implement any necessary control measures and review these to ensure that they remain relevant
- check and document that the working environment is safe; equipment, products and materials are used safely; that health and safety procedures are effective and complied with and that any necessary remedial action is taken
- inform, instruct, train, supervise and communicate with employees and provide them with equipment, materials and clothing as is necessary to enable them to work safely;
- complete a health and safety induction checklist for all new employees at the commencement of their employment
- report all accidents, incidents and near miss events, undertake an investigation into the cause and take appropriate remedial action to prevent recurrence
- be responsible for aspects of health and safety included in their job description
- organise risk assessments where significant risks are identified and ensure as far as is reasonably practicable the implementation of any control measures
- ensure that all statutory registers and records are adequately kept
- ensure the reporting and investigation of all accidents
- ensure all persons under their control are aware of the reporting procedure

School Business Manager and Premises Officer

In addition to the responsibilities above the Headteacher, School Business Manager and Premises Officer have specific duties:

- to maintain an understanding of the Health and Safety Policy arrangements and the School Business Manager / Premises Manager responsibilities detailed within them.
- to maintain an awareness of the relevant premises related health and safety legislation, issues and procedures
- to control contractors working on the premises and ensure that hazard information has been exchanged and suitable risk control measures implemented
- ensuring adequate security arrangements are maintained
- ensuring the general cleanliness of the premises and that adequate welfare facilities are maintained
- arranging for regular inspection of the areas of the premises for which they are responsible; that workplace health and safety standards are in effective working order and that a safe means of access and egress is maintained.
- ensuring that adequate fire safety arrangements and emergency procedures are implemented and maintained
- Ensuring that plant and equipment is adequately maintained
- Arranging for the regular testing and maintenance of electrical equipment
- Maintaining suitable records of plant and equipment maintenance and tests
- Ensure fire risks are formally assessed and adequate fire safety arrangements are provided, maintained, monitored and recorded including; fire risk assessments, fire evacuation drills, fire officer inspections and the maintenance of fire extinguisher/blankets, emergency lighting, fire alarm (including detectors and sensors) and any other fire safety equipment devices
- Ensuring first aid requirements for the premises are formally assessed and adequate provision is provided, maintained and monitored
- Ensuring that all premise related hazards are adequately identified, assessed and suitable and sufficient control measures implemented and monitored
- Ensuring the adequate provision of health and safety notices and warning signs are prominently displayed and comply with the Health and Safety (Safety Signs and Signals) Regulations 1996
- Maintaining a health and safety file on the premises in relation to any construction work covered by the Construction (Design and Maintenance) Regulations 2015 and make this available to contractors upon request
- Ensuring that adequate systems are in place for the management of asbestos through the 'Local Asbestos Management Plan' and control of legionella and excessive hot water temperatures
- To respond promptly to a notification of a defect that could affect the health and safety of building occupants/visitors
- Liaison with other staff members where premises/equipment monitoring and maintenance responsibilities are held elsewhere within the Ashby Hastings Primary School i.e. design and technology and science

All Staff

2.7 All employees, agency and peripatetic workers and contractors must comply with the school's health and safety policy and associated arrangements, in addition to any specific responsibilities which may be delegated to them. All staff are required to:

- take reasonable care for their own health and safety at work and of those who may be affected by their actions or by their omissions
- cooperate with their line manager and senior management to work safely
- comply with health and safety instructions and information and undertake appropriate health and safety training as required
- not intentionally or recklessly interfere with or misuse anything provided in the interests of health, safety and welfare
- report to their manager any health and safety concerns, hazardous condition or defect in the health and safety arrangements
- support Ashby Hastings Primary School in embedding a positive safety culture that extends to pupils and any visitors to the site

Pupils

2.8 All pupils are expected to behave in a manner that reflects the Ashby Hastings Primary School's behaviour policy and in particular are expected to:-

- take reasonable care for their own health and safety and of their peers, teachers, support staff and any other person that may be at Ashby Hastings Primary School
- cooperate with teaching and support staff and follow all health and safety instructions given
- not intentionally or recklessly interfere with or misuse anything provided in the interests of health, safety and welfare
- report to a teacher or other member of Ashby Hastings Primary School staff any health and safety concerns that they may have

Shared site users (delete if not required)

2.9 Where two or more employers share a workplace, each employer shall co-operate with the other employers concerned to enable them to comply with their duties under health and safety legislation. Ashby Hastings Primary School as the primary site user will have the lead responsibility.

All users of the shared site must agree to:

- co-operate and co-ordinate with Ashby Hastings Primary School on health and safety matters
- provide information relating to any additional risks or procedures which will be new or unusual to those of Ashby Hastings Primary School that may arise from their activities
- maintain a standard of health and safety which is reasonably practicable and at least equivalent to the standard maintained by Ashby Hastings Primary School so as to ensure the health, safety and welfare of all Ashby Hastings Primary School staff and users
- meet the insurance requirements of Ashby Hastings Primary School and the of the school's insurance provider
- familiarise themselves with and communicate to their employees/users the Ashby Hastings Primary School's health and safety arrangements

Ashby Hastings Primary School will ensure that:

- the premises are in a safe condition for the purpose of use
- adequate arrangements for emergency evacuation are in place and communicated
- users are consulted on health and safety matters
- that Ashby Hastings Primary School's health and safety arrangements are made available to shared users

Lettings

2.10 Ashby Hastings Primary School has a lettings policy. The policy covers procedures for fire evacuation and security arrangements and the requirements relating to accident, assault and near miss reporting requirements and the provision of first aid.

Persons/organisations letting the site must agree to:

- co-operate and co-ordinate with the Ashby Hastings Primary School on health and safety matters
- agree to the terms of the lettings policy in relation to health and safety arrangements
- provide information relating to any additional risks or procedures which will be new or unusual to those of the Ashby Hastings Primary School that may arise from their activities

Ashby Hastings Primary School will ensure that:

- the premises are in a safe condition for the purpose of use
- the health and safety arrangements detailed in the lettings policy are fully explained and communicated to all individuals or groups letting a space/area of the school premises
- adequate arrangements for emergency evacuation are in place and communicated

3.0 Organisational Arrangements for Health and Safety

3.1 The following arrangements will be adopted to ensure that the Local Governing Body and the Head Teacher fulfil their responsibilities and provide the foundation for securing the health and safety of employees and all users of the site

Setting health and safety objectives

3.2 The Local Governing Body and the Head Teacher will specifically review progress of health and safety objectives at the termly meeting of the Local Governing Body. Where necessary health and safety improvements will be identified and included within the Ashby Hastings Primary School's action plan.

Provision of effective health and safety training

3.3 The Local Governing Body and the Head Teacher will consider health and safety training on an annual basis in line with Ashby Hastings Primary School's health and safety training matrix focussing on mandatory training as a priority.

Provision of an effective joint consultative process

3.4 Not applicable at Ashby Hastings Primary School

Establishing adequate health and safety communication channels

- 3.5 Communication channels will be established for the exchange of health and safety knowledge and information. Where necessary, these communications will be recorded and include:
- senior leadership team meetings and staff meetings
 - site health and safety committee
 - provision of information relating to safe systems of work and risk assessments
 - training provided
 - communications with relevant specialist advisors and bodies
- 3.6 Where health and safety issues cannot be resolved at local level, they will be escalated through the management structure as appropriate.

Financial resources

- 3.7 The Local Governing Body along with the Head Teacher will review the Ashby Hastings Primary School budget to determine, in the light of past performance, if adequate resources are being deployed to ensure adequate health and safety management and control.

Specialist advice/support

- 3.8 Ashby Hastings Primary School will ensure that access to competent technical advice on health and safety matters is procured to assist Ashby Hastings Primary School in complying with statutory duties and meeting health and safety objectives; Ashby Hastings Primary School will do this by;
- Accessing the services of a competent Health and Safety Advisor through Leicestershire County Council Health, Safety and Wellbeing Service

4.0 Organisation - Other Arrangements

Accident and assaults

- 4.1 All accidents, assaults and near miss incidents will be reported in the accident book or agreed reporting form within 24 hours of occurrence; RIDDOR reportable incidents, as per the HSE's Information Sheet (EDIS1), will be reported to the HSE within the required timescales.
- 4.2 All incidents will be investigated in an attempt to identify the root cause: relevant local policies, procedures and risk assessments will be reviewed and revised as required. All premises related issues will be addressed in a timely manner. Any relevant learning from investigations will be communicated to relevant staff, pupils etc.
- 4.3 Accident, assaults and near miss incidents will be monitored at least termly as part of the site health and safety committee; identification of significant trends or major incidents will be reviewed by the senior leadership team as required with information communicated to the local governing body.
- 4.4 Accident records will be retained for the following periods; Pupil's records will be retained for a period of Date of Birth + 25 years, employee records will be retained from the date of incident + 7 years and forms relating to work related ill health is current year + 10 years or longer (40 years where there has been potential exposure to asbestos; where radiation is the cause retention is last action + 50 years).

Audit

- 4.5 Ashby Hastings Primary School's health and safety management will be audited by Leicestershire Traded Services every two years. Ashby Hastings Primary School reviews this process as a positive assessment of our health and safety management system and takes appropriate action to continually improve health and safety across the Ashby Hastings Primary School.

Contractor management

- 4.6 Ashby Hastings Primary School comply with the HSE's approved code of practice Construction (Design and Management) Regulations 2015' (L153) relating to the management and control of contractors. Ashby Hastings Primary School ensures that:
- roles of client, principal designer, designer, principal contractor, contractor are understood and formally allocated
 - competent contractors are used
 - clear specifications of works are drawn up by a competent person to include phases of the work, duration, separation of building and school site, delivery times and locations, tapping into utilities, site security, fire and emergency coordination, fire escape routes, accident reporting etc.
 - pre-start meetings take place to discuss how works will be managed, responsibilities, codes of conduct and to assess new hazards that may be introduced to the site
 - key contacts are identified
 - regular update meetings take place throughout any works/projects
 - works are visually monitored and any concerns immediately reported
 - works are signed off and any associated certification and documentation is obtained
 - all staff/ pupils and other users of site remain in a safe environment for the duration of the works.
 - all contractors are given access to the asbestos register

Control of hazardous substances

- 4.7 Ashby Hastings Primary School comply with the HSE's approved code of practice Control of Substances Hazardous to Health (L5) relating to the management and control of hazardous substances on site. Ashby Hastings Primary School will ensure:
- an inventory of all hazardous substances on site is kept and updated regularly
 - wherever possible non-hazardous substances are used and if this is not possible the least harmful substance is used
 - a COSHH risk assessment will be completed for all hazardous substances used and shared with relevant staff
 - wherever possible exposure to hazardous substances is prevented, where exposure cannot be prevented, a risk assessment will be carried out and controls measures implemented
 - where identified as part of the risk assessment, appropriate PPE will be provided to staff
 - any requirement for exposure monitoring or health surveillance will be carried out

- sufficient information, instruction and training is given to staff to ensure full understanding of the hazards to health posed by substances in the workplace and the importance of control measures provided
- training records are maintained for those who receive training
- information will also be given to others who may be affected, such as contractors, temporary staff and visitors
- only substances purchased through the school's procurement systems can be used on site
- substances are stored correctly and those that are no longer used are disposed of as per the substances safety data sheet
- COSHH risk assessments are monitored quarterly and reviewed annually

Dealing with health and safety emergencies - procedures and contacts

- 4.8 As per legal requirements all dangerous occurrences and near miss incidents that are RIDDOR reportable incidents, will be reported to the HSE within the required timescale.
- 4.9 All incidents will be investigated in an attempt to identify the root cause: relevant local policies, procedures and risk assessments will be reviewed and revised as required. All premises related issues will be addressed in a timely manner. Any relevant learning from investigations will be communicated to relevant staff, pupils etc.

See the school's Critical Incidents Policy

Defect reporting

- 4.10 Ashby Hastings Primary School has a defect reporting procedure whereby any damage or defect to the premises, equipment or furnishings is reported. Defective equipment is isolated and labelled as defective to prevent use until replaced or repaired. Where premises defects are identified a dynamic assessment is carried out to decide whether an area should be isolated or cordoned off whilst awaiting repair.

Display screen equipment (DSE)

- 4.11 Ashby Hastings Primary School acknowledges that staff who use DSE should have suitable equipment to undertake the tasks that they are required to carry out, knows how to safely use the equipment and have a DSE assessment which is reviewed at suitable intervals. Ashby Hastings Primary School ensures that:
- all static workstations used by staff meet the minimum standards required
 - equipment is maintained in good working condition
 - staff are aware of best practice in using DSE and issued with relevant information
 - staff whose roles require significant use of DSE are prioritised for individual assessment
 - assessments are reviewed at least bi-annually, earlier if there are significant changes to equipment/layout/individual health
 - a trained DSE assessor is available

Driving

- 4.12 All staff that drive their own cars for work purposes must have a full UK driving licence, business insurance and maintain their vehicle in a road worthy condition.

Electrical systems and equipment

- 4.13 Ashby Hastings Primary School maintains and services electrical systems and equipment in line with statutory guidance and best practice. Electrical systems (hard wiring) is periodically inspected every 5 years by a competent contractor and records maintained; any remedial works recommended are acted upon in a timely manner.
- 4.14 Portable electric appliances have a portable appliance test (PAT) carried out, in line with HSE guidance '*Maintaining portable electrical equipment in low risk environments*' (INDG236), by a competent contractor with records maintained.
- 4.15 Formal annual workplace inspections are undertaken whereby all equipment is visually inspected. Staff are instructed to undertake a visual inspection of equipment prior to use and not to use any equipment that appears damaged or defective. Ashby Hastings Primary School's defect reporting procedure is followed as required.

Fire safety

- 4.16 Ashby Hastings Primary School is committed to providing a safe environment for both staff and pupils. Ashby Hastings Primary School manages the risk of fire by ensuring:
- a comprehensive fire risk assessment is in place, reviewed bi-annually and any actions/improvements identified are progressed given consideration to risk and cost
 - a detailed fire and emergency evacuation plan has been developed that clearly details actions to be taken when a fire is identified or suspected, individual responsibilities and arrangements for safe evacuation, this will include the development of a Personal Emergency Evacuation Plan (PEEP) for any person requiring assistance in an evacuation.
 - statutory inspections are carried out on all fire related systems and equipment either by competent contractors or in house by trained staff
 - all staff receive fire awareness training that is regularly updated and fire marshals receive role specific instruction
 - a fire drill is undertaken at least termly to practice evacuation arrangements and to ensure that the evacuation procedure is carried out successfully and as expected.
 - A fire log book is kept and maintained

First-aid and supporting pupils' medical conditions

- 4.17 Adequate first aid arrangements are assessed, maintained and monitored at Ashby Hastings Primary School and for all activities that Ashby Hastings Primary School leads. Ashby Hastings Primary School ensures that:
- the number of first aiders and appointed persons meets recommendations and adequate cover is available to cover for annual leave and unexpected absences
 - all first aiders and appointed persons hold a valid certificate of competence, Ashby Hastings Primary School maintains a register of all qualified staff and will arrange re-training as necessary
 - first aid notices are clearly displayed around Ashby Hastings Primary School
 - sufficient numbers of suitably stocked first aid boxes are available and checked periodically to ensure they are adequately stocked
 - a suitable area is available for the provision of first aid

- staff are regularly informed of first aid arrangements within Ashby Hastings Primary School, through induction, teacher training days and the staff handbook
- where first aid has been administered this is recorded in the first aid treatment book. Minor injuries and treatment (e.g. small cuts, scrapes etc.) are not recorded.
- correct reporting procedures are followed including those required under RIDDOR regulations
- individual risk assessments have been carried out which consider first aid provision for lone workers and employees who travel in works vehicles that carry passengers.
- information, instruction and training will be provided to staff on any specific medical conditions of pupils and the procedures to follow in case of an emergency
- children with medical conditions will be cared for in line with the medical conditions policy
- medication shall be kept securely in line with the medical conditions policy

Glass & Glazing

4.18 Ashby Hastings Primary School will comply with the Workplace (Health, Safety and Welfare) Regulations 1992 and the Approved Code of Practice L24 as it relates to glass and glazing

4.19 Ashby Hastings Primary School will survey its glass surfaces in doors, windows and door side panels for the presence of safety glass and where appropriate will make remedial actions to install safety glass or film and have it suitably marked to that effect.

Grounds - Safety/Security

Safety

4.20 Ashby Hastings Primary School will ensure that there is safe access and egress from the buildings and grounds including balancing the need for security with the need for emergency escape. Ashby Hastings Primary School will ensure that there is a regime for maintaining the grounds, perimeter demarcation (where owned) and equipment e.g. outdoor play equipment

Housekeeping – storage, cleaning & waste disposal

4.21 Ashby Hastings Primary School will ensure that there is suitable and sufficient storage including systems for ensuring that items are included on an inventory and checked periodically where necessary for safety.

4.22 Ashby Hastings Primary School will ensure that there are systems in place for cleanliness, to minimise the accumulation of rubbish, for the removal and disposal of controlled waste and for the cleaning of spills/ wet floors to minimise the risk of slips. Ashby Hastings Primary School will ensure that there is suitable and sufficient external waste bins secured from the risks of arson and tampering.

4.23 Where applicable and to accommodate the requirements of environmental legislation Ashby Hastings Primary School will arrange for suitable disposal/recycling of relevant items e.g. fluorescent lighting and waste electrical appliances.

- 4.24 Suitable arrangements will be made for the clearing of snow as part of winter preparedness.

Jewellery

See the school's Dress Code

Lone working

- 4.25 Ashby Hastings Primary School will ensure through risk assessment that all staff who work alone are given suitable instruction on lone working procedures including communications, emergency procedures and any restrictions during lone working e.g. work at height. See the school's Lone Working Procedure.

Management of asbestos

- 4.26 Ashby Hastings Primary School was built in 2020 and there is no asbestos on site.

Moving and handling

- 4.27 Ashby Hastings Primary School complies with the HSE's approved code of practice *'Manual Handling. Manual Handling Operations Regulations 1992 (as amended). Guidance on Regulations (L23)*.
- 4.28 Within Ashby Hastings Primary School there are a variety of moving and handling tasks that may be necessary; this could range from moving files to assisting an individual with mobility issues. Ashby Hastings Primary School manages the risk associated with moving and handling tasks by ensuring that:
- moving and handling is avoided whenever possible
 - if it cannot be avoided, moving and handling is properly planned, has a relevant risk assessment, is carried out by competent staff and carried out in a manner which is, so far as is reasonably practicable, safe
 - those undertaking specific moving and handling tasks have received appropriate training and training records are maintained
 - any equipment provided to assist with moving and handling tasks is maintained and serviced in accordance with statutory requirements
 - any defective equipment is taken out of use until repaired or is replaced
 - an individual risk assessment will be completed for all new or expectant mothers and staff with identified medical conditions that may be affected by undertaking moving and handling tasks, these may result in some moving and handling task being restricted
 - any accidents resulting from manual handling operations will be investigated to identify root causes and implement additional controls as required

Noise

- 4.29 Ashby Hastings Primary School will make arrangements for the assessment of risk, protection and other control measures where the noise levels reach the action values as detailed within the Control of Noise at Work Regulations 2005

Occupational health services and work-related stress

- 4.30 Ashby Hastings Primary School acknowledges that there are many factors both work related and personal that may contribute to staff being absent from work through injury and ill health including stress.
- 4.31 Ashby Hastings Primary School will follow the principles of the HSE guidance '*Managing the causes of work-related stress*' (HS(G) 218). The following arrangements are in place to locally manage staff health issues:
- employees are advised that it is their responsibility to inform their line manager, the Head Teacher or another member of the senior leadership team of any ill health issues
 - an appropriate senior member of staff will meet and discuss the ill health issues with the employee and consider what actions could be taken to support the staff member and where appropriate assist in reducing stress levels
 - the member of staff will be offered a referral to an occupational health professional for advice and support, e.g. counselling, etc.
 - the member of staff will be advised that support can also be provided through their trade union
 - a series of regular review meetings will be scheduled to monitor ill health and stress levels where they have been identified
 - if it is identified that there is a high occurrence of staff ill health or stress within the Ashby Hastings Primary School, the Head Teacher will actively seek support to undertake a holistic assessment to identify what the possible root cause may be and implement a plan to improve the situation.

Off-site visits including school-led adventure activities

- 4.32 Ashby Hastings Primary School adopts the National Guidance for the Management of Off-site visits. See the school's Educational Visits Policy.

Risk assessment

- 4.33 Risk assessments are undertaken for tasks/activities where significant hazards have been identified or where there is a foreseeable risk of injury/ill health.
- 4.34 Within Ashby Hastings Primary School various persons are tasked with the development of risk assessments based on their knowledge, experience and competence. Relevant staff will develop the risk assessments prior to consultation with all staff to which they are relevant prior to sign off. Risk assessments are accessible to staff at all times electronically and in hard copy in the Risk Assessments folder.
- 4.35 New and expectant mothers risk assessments will be conducted in line with HSE Guidance.
- 4.36 Young person's risk assessments will be carried out for staff working on site falling within this age range, as applicable.

Smoking

- 4.37 Ashby Hastings Primary School complies with UK law on smoking in both indoor and external spaces. Ashby Hastings Primary School has a no smoking policy which

AH Health and Safety Policy extends to the limits of the curtilage of the site. The policy extends to the used of substitute inhalers and all types of vaping devices including e-cigarettes. Ashby Hastings Primary School has signage on site and will ensure that persons seen smoking onsite are instructed not to do so.

Statutory Inspections

4.38 Ashby Hastings Primary School ensures that statutory inspections are undertaken at required intervals for all plant and equipment required. A table detailing required inspections, date of last inspection, date of next inspection and who is undertaking the inspection has been developed which is implemented by the Premises Officer and monitored by the Business Management Committee.

Preventing workplace harassment and violence

4.39 Ashby Hastings Primary School is committed to providing a safe and secure working and educational environment for staff, pupils and any other persons on its site. Where applicable, in addition to the control measures identified in the site specific lone working risk assessment, the following procedures are in place:

- Staff are advised to:
 - avoid confrontation if possible
 - withdraw from a situation or escalating situation
 - arrange seating so that a clear escape route from the room to a place of safety is available. Sit near the door, or use a room with two doors
 - contact emergency services, as appropriate.
 - inform the Head Teacher or a member of the senior management team if confrontation has taken place
- Ashby Hastings Primary School will :
 - ensure the Head Teacher or member of the senior leadership team to attend the site of an incident on being informed of an incident, if considered necessary
 - have in place procedures for the reporting of incidents
 - offer counselling/ support through Occupational Health
 - debrief individuals following any incident
 - provide training on how to manage conflict and aggression as required
 - review the appropriate risk assessments following any incident.

Vehicles on Site

4.40 Only staff and official visitor vehicles should be parked in the school car park other than, where space permits, delivery and construction vehicles requiring closer access to specific areas of the school. Drivers of such vehicles should report to the Office in the first instance. Drivers with Blue Badge Disability Permits may also use the designated parking spaces. There is restricted vehicle access to site between 08:40 and 15:30pm.

Water hygiene management

4.41 Ashby Hastings Primary School will comply with the HSE approved code of practice '*Legionnaires' disease - The control of legionella bacteria in water systems*' (L8).

Ashby Hastings Primary School will:

- employ an external person with relevant knowledge and competence to obtain initial advice on any necessary actions
- employ a competent external contractor to provide a suitable survey/risk assessment; with the risk assessment being reviewed at least every two years or whenever there is reason to suspect it is no longer valid
- Address any remedial actions identified by the survey including dead leg removal or drain down
- employ a competent external contractor to undertake water sampling and routine cleaning, maintenance and disinfection of water systems and thermostatic mixing valves (TMV's) as applicable
- ensure regular flushing of little used outlets is completed by a competent individual on a weekly basis
- employ a competent person to undertake monthly monitoring of water systems including temperature readings

Working at height

4.42 Ashby Hastings Primary School will follow the principles of the HSE guidance *'The Work at Height Regulations 2005 (as amended) A brief guide' (INDG401)*. Ashby Hastings Primary School use a variety of access equipment for working at height tasks including ladders, step ladders and kick stools. Ashby Hastings Primary School ensures that:

- work at height is avoided whenever possible
- if it cannot be avoided, work at height is properly planned, has a relevant risk assessment, is carried out by competent staff and carried out in a manner which is, so far as is reasonably practicable, safe
- those undertaking work at height have received appropriate training and training records are maintained
- all access equipment (ladders, step ladders, tower scaffolds etc.) is identifiable and inspected as required
- any equipment provided to assist with working at height tasks is maintained and serviced in accordance with statutory requirements
- any defective equipment is taken out of use until repaired or is replaced
- an individual risk assessment will be completed for all new or expectant mothers and staff with identified medical conditions that may be affected by undertaking working at height tasks, these may result in some working at height tasks being restricted
- any accidents resulting from working at height will be investigated to identify root causes and implement additional controls as required

Workplace inspections

4.43 Ashby Hastings Primary School recognises the importance of undertaking regular formal workplace inspections to ensure that the premises remain a safe working and educational environment for staff and pupils. A formal annual workplace inspection is undertaken with findings documented and any actions allocated with remedial actions. The annual inspection findings are reviewed with actions monitored for close out at the Business Management Committee. It is recognised that termly inspections alone will

AH Health and Safety Policy
not keep a premises safe and there is an expectation that staff will report any defects/damage to premises and equipment as per the Ashby Hastings Primary School's defect reporting procedure.

Monitoring and review

- 4.44 This Health and Safety Policy together with the associated procedures and health and safety performance, will be reviewed by the Local Governing Body and the Head Teacher on a regular basis (every two years as a minimum), or as required.
- 4.45 In order to substantiate that health and safety standards are actually being achieved, Ashby Hastings Primary School will measure performance against pre-determined plans and objectives. Any areas where the standards are not being met will require remedial action.
- 4.46 Ashby Hastings Primary School will use different types of systems to measure health and safety performance:
- 4.47 Ashby Hastings will subscribe to a professional body to assist with monitoring and evaluation of compliance. The school currently subscribes to the Leicestershire Local Authority H&S Service who perform an annual audit.

Active monitoring systems

- spot checks and termly site inspections will be undertaken
- documents relating to the promotion of the health and safety culture will be regularly examined and reviewed
- appropriate statutory inspections on premises, plant and equipment will be undertaken
- where necessary, health surveillance and environmental monitoring systems will be implemented to check the effectiveness of health control methods and to detect early signs of harm to health.

Reactive monitoring systems

- identifying where health and safety standards are not being met, by monitoring for failures in the systems - such as accidents, cases of ill health (work-related sickness), damage to property, etc

Reporting and response systems

- ensuring that monitoring information is received, having regard to situations which create an immediate risk to health or safety, as well as longer-term trends and ensuring remedial action is taken
- Senior Leaders and the Local Governing Body will receive and consider reports on health and safety performance.

Investigation systems

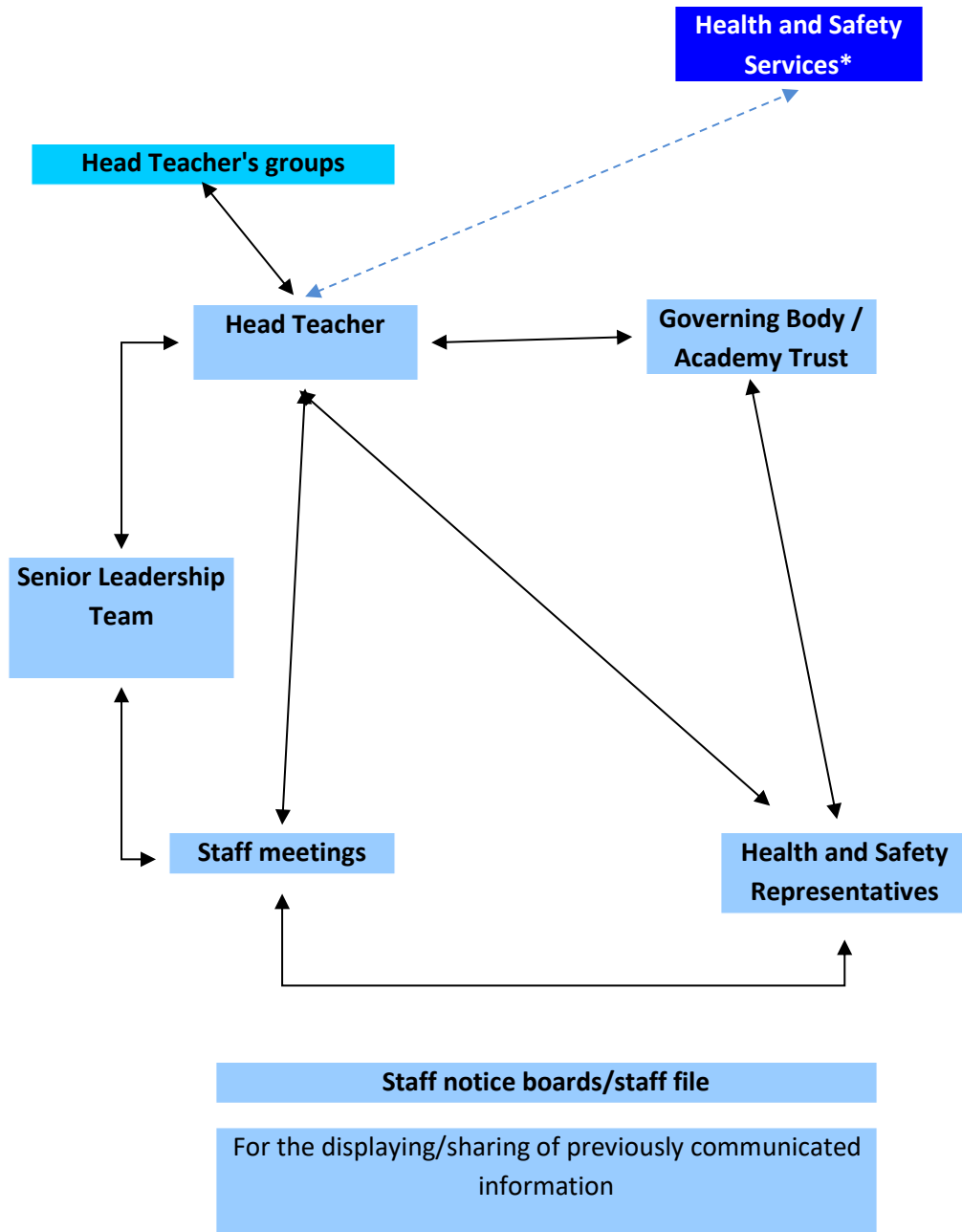
- investigations will be implemented for incidents proportionate to the severity of the incident. The investigation will incorporate systems to identify both the immediate and the underlying causes of events
- analysing data to identify common features or trends and initiate improvements

- where cases of occupational ill-health are to be investigated
- where complaints relating to occupational health and safety are to be recorded and investigated
- where accidents/incidents and assaults with the potential to cause injury, ill-health or loss are to be reported, recorded and appropriately investigated

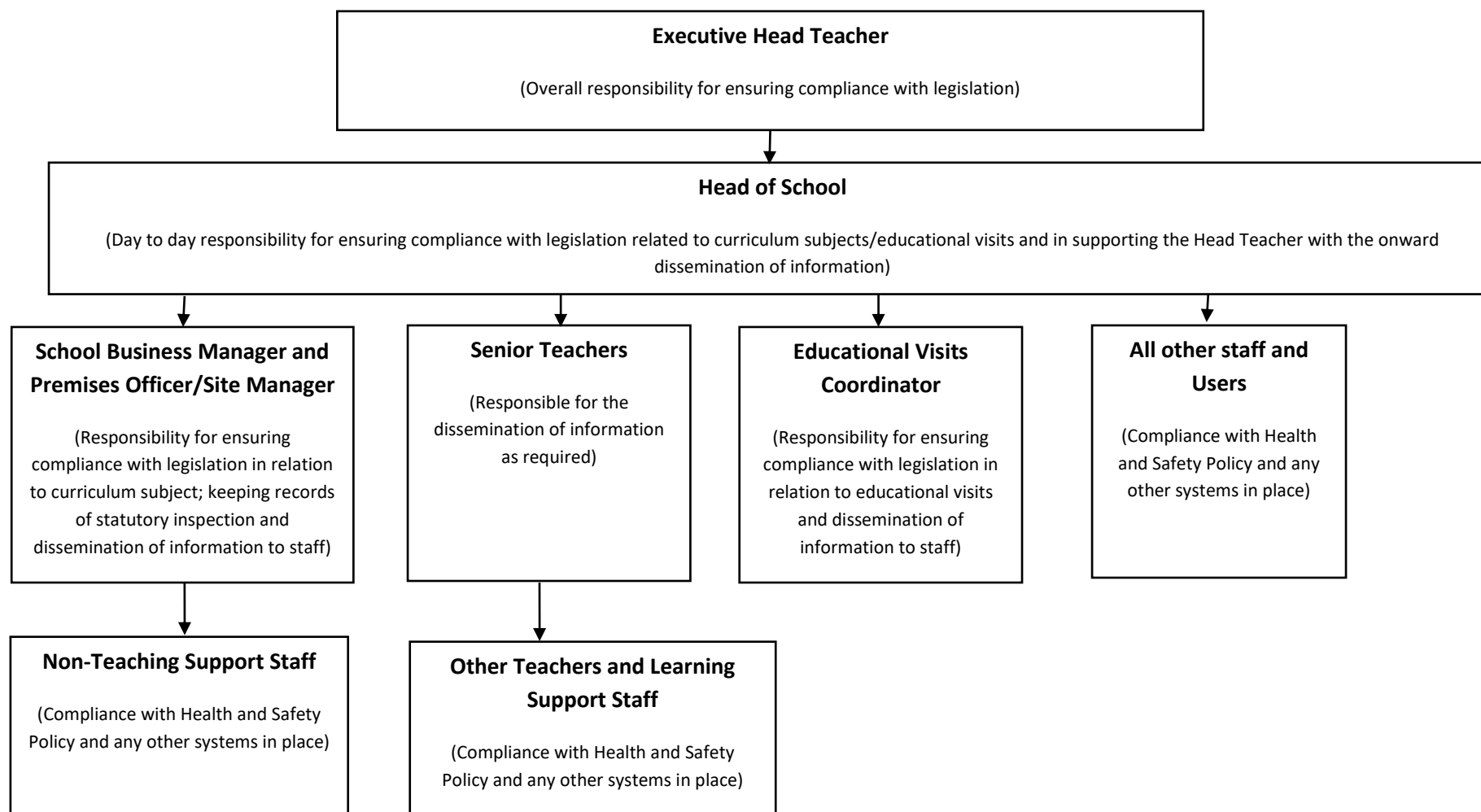
Third Party Monitoring/ Inspection

- Ashby Hastings Primary School will be subject to third party inspection and monitoring, as part of Ofsted requirements. Actions arising from third party audit/inspection will be incorporated within the Ashby Hastings Primary School action plan with appropriate target dates for completion

Organisation and Arrangements



Ashby Hastings Primary School Health and Safety Organisation and Arrangements – All Staff



Ashby Hastings Primary School Health and Safety Organisation and Arrangements – Specifics for Support Staff

